

... arte permanente



denise &
beppe berna

... arte permanente

EXCEPTIONAL



© denise & beppe berna
2019, bologna, italy

all ... by
beppe berna



Naqada

Circa 3600 BC. [T/L test]

Cm. 24,5

AMART.

Antiquari Milanesi | ARTE È MILANO

PALAZZO DELLA PERMANENTE
via filippo turati, 34 - MILAN

stand n. 47
ground floor

may 8 – 12, 2019

dan

EXCEPTIONAL



Dan

153Y

Staff of dignitary of the
Master of the spoon Goldet
(Beppe Berna).

Early 20th century or earlier.

H. cm. 94

*French colonial collection.
Private collection, Paris.
Olivier Castellano, Paris.*



dogon

EXCEPTIONAL

Dogon, Bombou-Toro

141Y

Equestrian sculpture of the
Master of the knight
(Beppe Berna).

Nineteenth century.

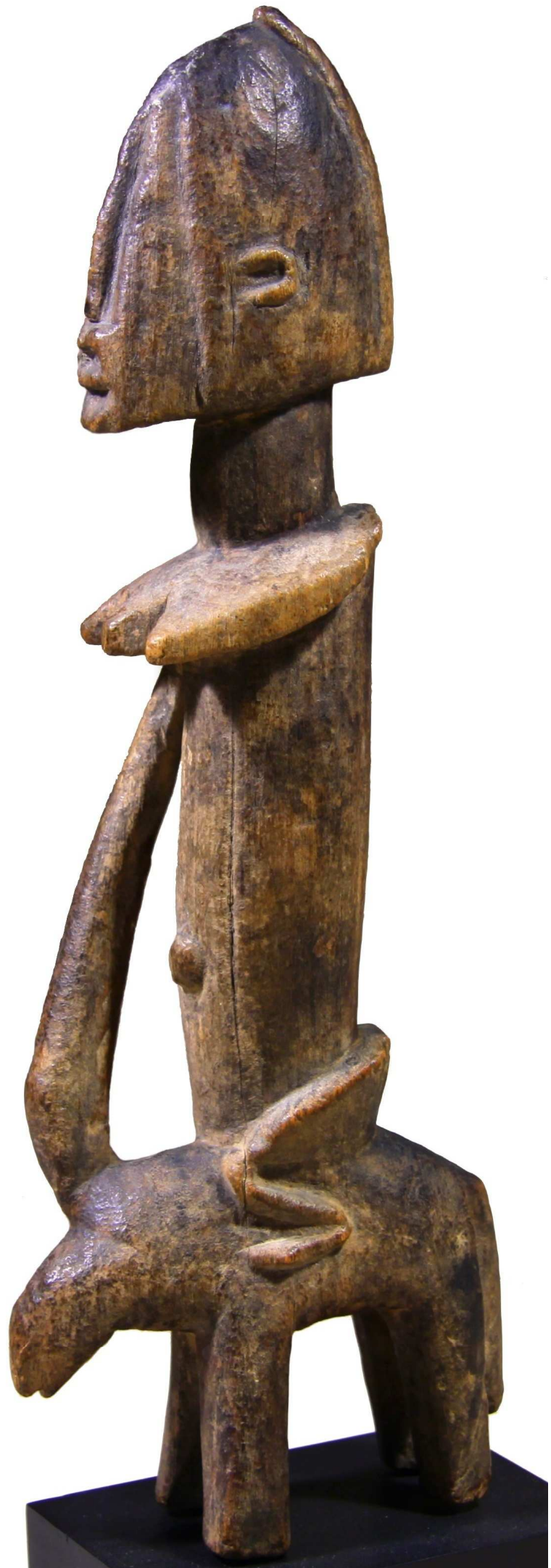
H. cm. 27

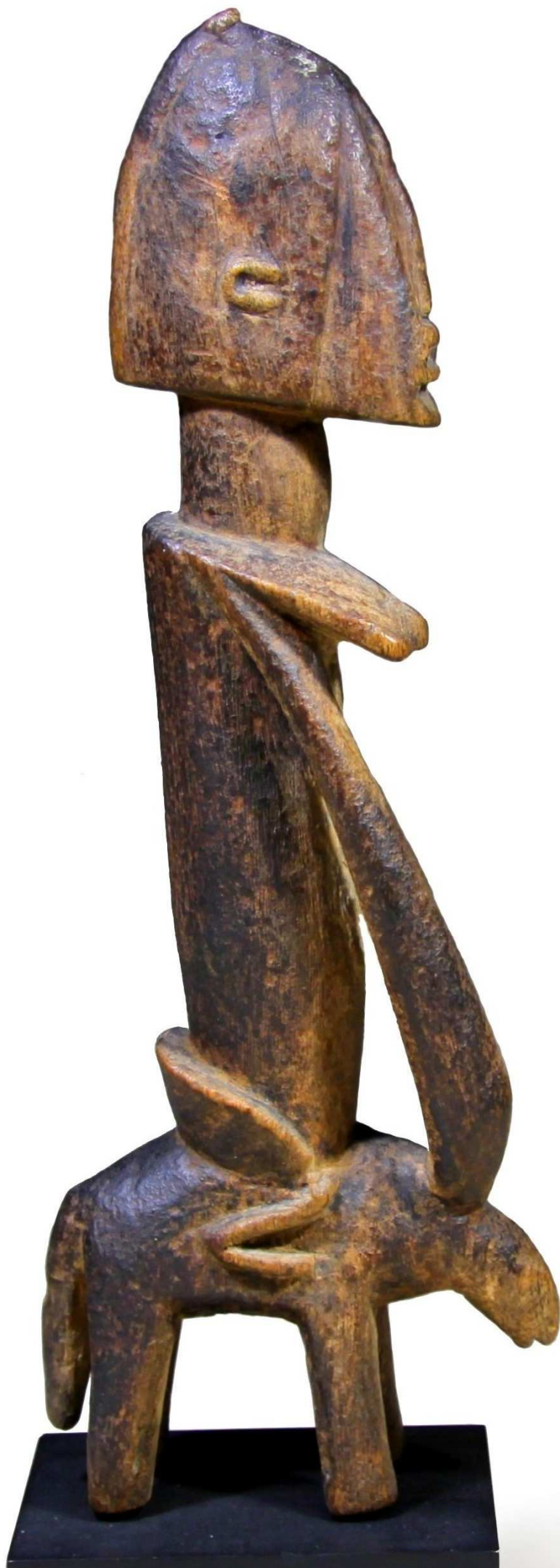
*Old French collection.
Cecilia and Irwin Smiley Coll.,
New York.
Pierre Dartevelle, Brussels.*

Exhibitions and publications:

*- Pag. 25, in "Discoveries:
African Art from the Smiley
Collection", Anita J. Glaze,
Alfred L. Scheinberg, Krannert
Art Museum in Champaign
(1989) and Smith College
Museum of Art in
Northampton (1990).*

*- N. 17, in "Animals in African
Art. From the Familiar to the
Marvelous", by Allen F.
Robberts, The Museum for
African Art, New York, 1995.*





Dogon, Tintam

138Y

Large sculpture depicting the
nommo.

15th / 17th century.
Radiocarbon C14.

H. cm. 104

*Collected in the 1950's by Emil
Storrer, Zurich.*

Jean David, Zurich.

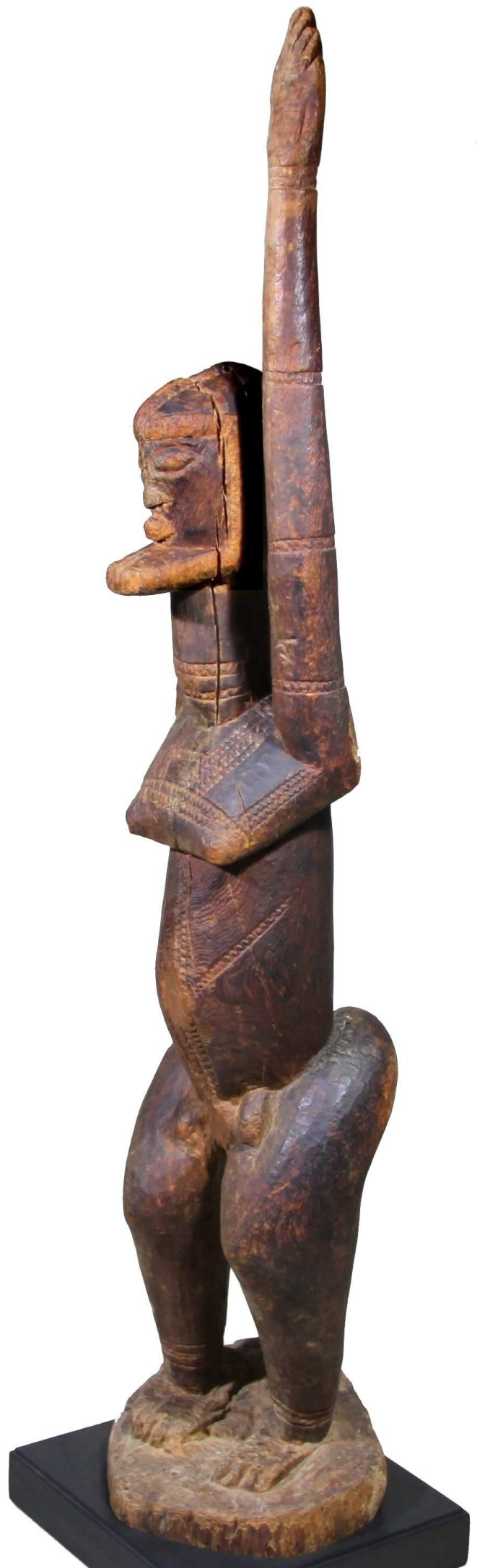
*Schweizer-Amsler,
Kastanienbaum.*

Pierre Dartevelle, Brussels.

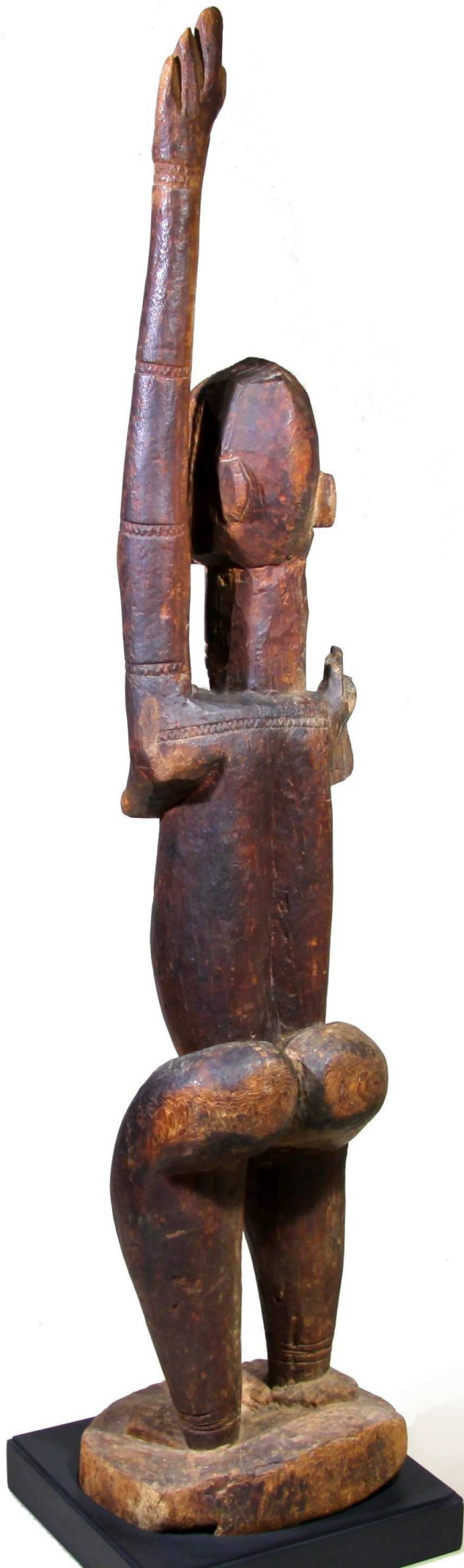
Yves Créhalet, Paris.

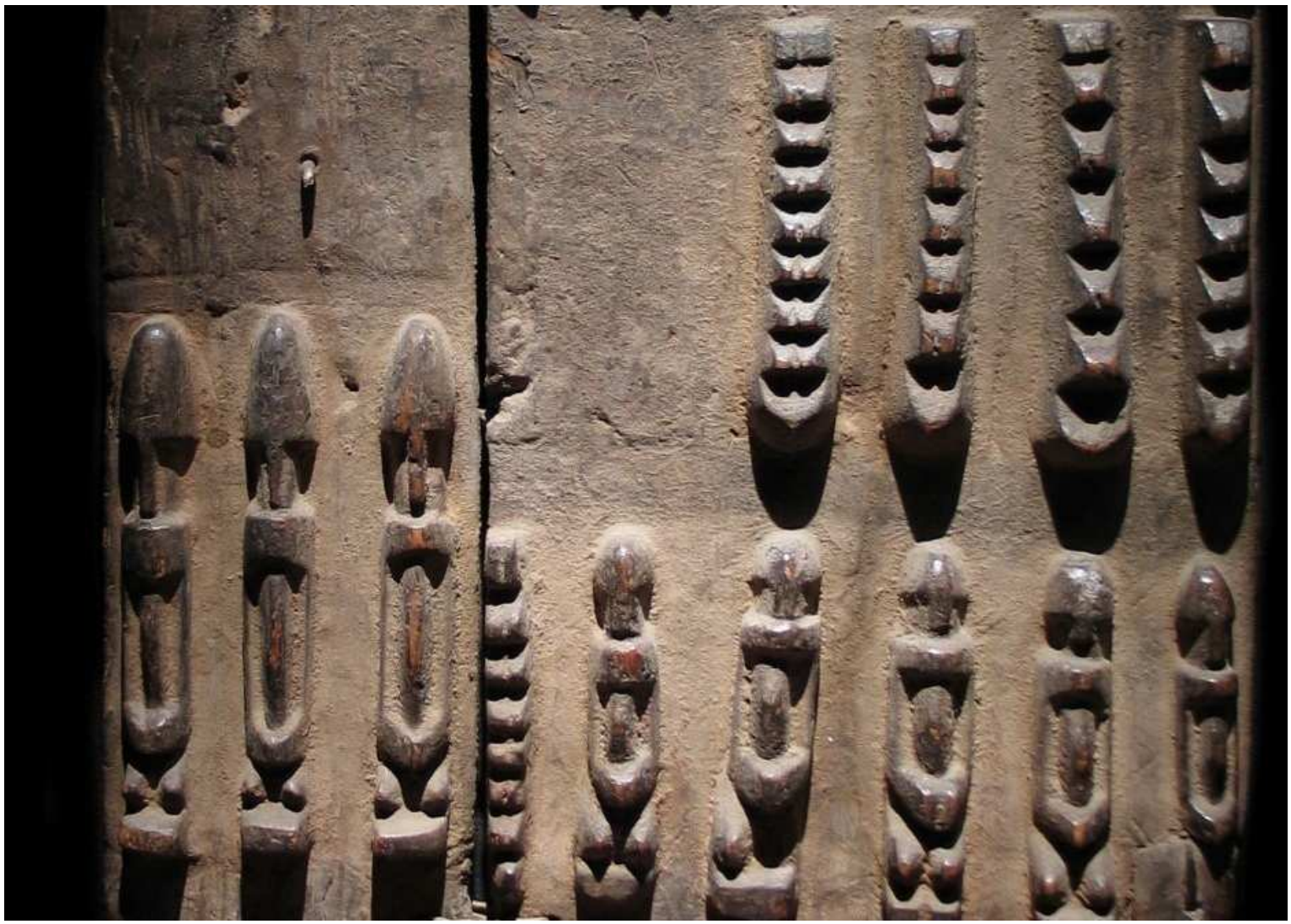
Exhibition and publication:

*"Continuité", n. 10 Galerie
Dartevelle, Paris et Bruxelles,
2014.*









Dogon

118T

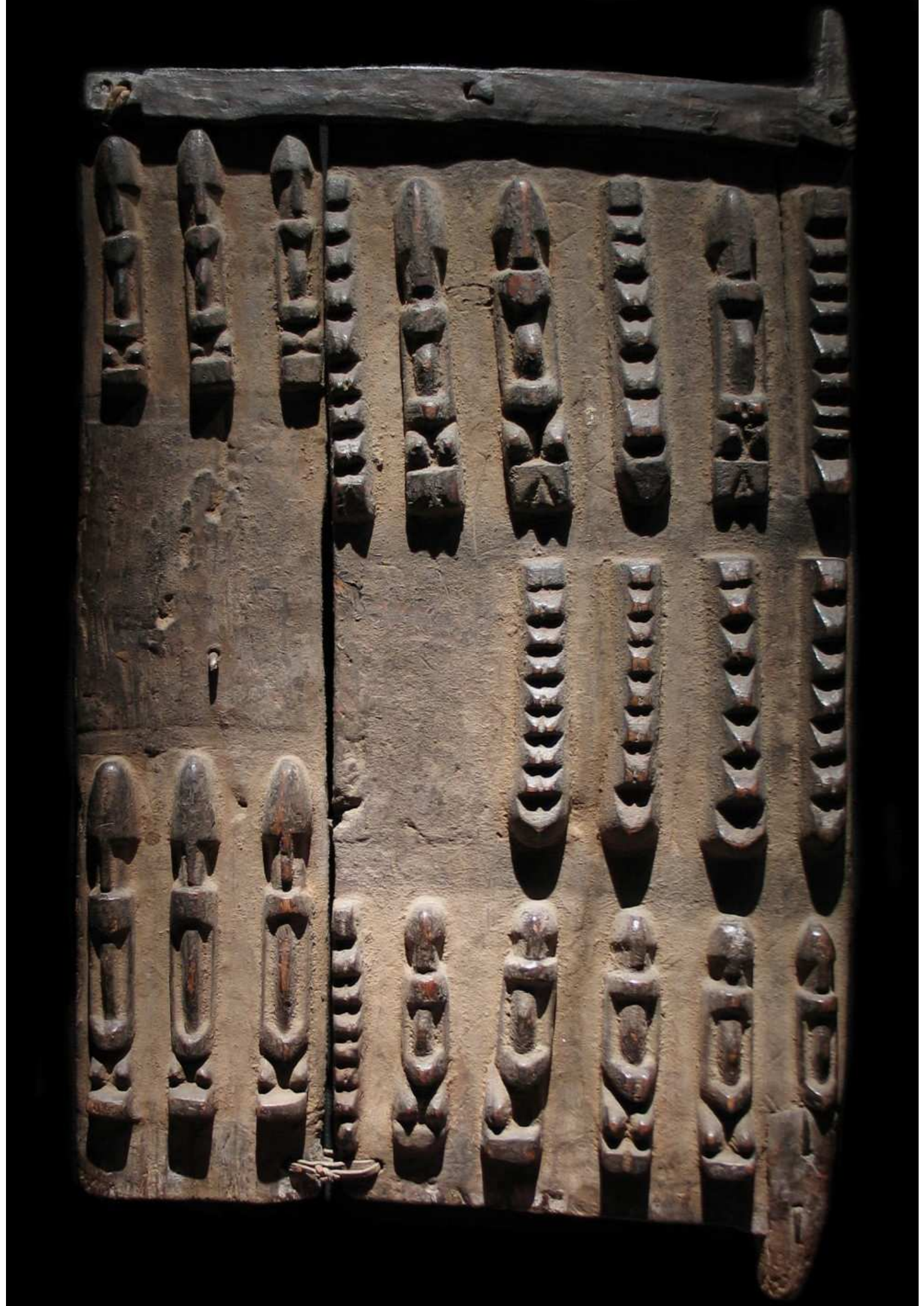
Granary (sanctuary) door for the *Hogon*.

18th / 19th century.

Cm. 43 x 73,5

*Private collection, Paris.
Ratton-Hourdé, Paris.*

*Exhibition and publication:
"Dogon", Galerie Ratton - Hourdé, Paris, 2005.
Pag. 76/77 of the catalog.*



Dogon, Bombou-Toro

140Y

Warrior statuette of the
Masters of Yougo (Beppe
Berna).

Late 18th / early 19th century.

H. cm. 27

*Old French private collection.
Pierre Darteville, Brussels.*







Dogon, Western Wakara, Tintam influences

154Y

Large hermaphrodite human figure.

17th / early 19th century.

H. cm. 51,5

*Old collections probably Swiss.
Philippe Ratton and Daniel Hourdé,
Paris.
French private collection.*

*Exhibition and publication:
"Dogon", Galerie Ratton - Hourdé,
Paris, 2005.
Pag. 48/49 of the catalog.*







Dogon, Bombou-Toro

142Y

Very rare hermaphrodite
statue for the foundation of
new villages.

Late 19th century or earlier.

H. cm. 26,5

*Old French private collection.
Pierre Darteville, Brussels.*







Dogon, Bombou-Toro

146Y

Human figure
depicting the *nommo*.

19th century.

H. cm. 30

*Old French collection.
Olivier Castellano, Paris.
Belgian private collection.
Joaquin Pecci, Brussels.*





Dogon, Bombou-Toro

139Y

Human figure depicting the
nommo.

19th century.

H. cm. 27,5

*Collected in 1966 by a member of
the Peace Corps Volunteer.*

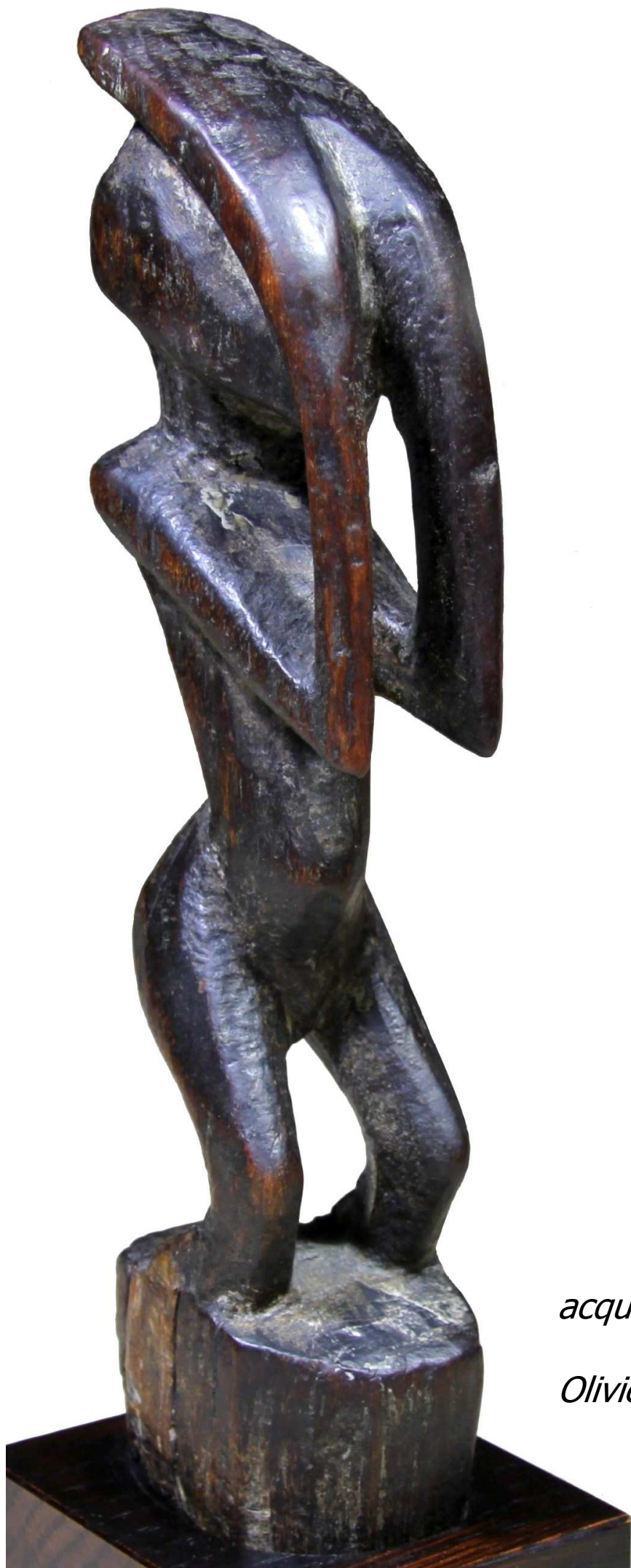
Roy Stacy collection, Washington.

Yves Créhalet Collection, Paris.

Private collection, Paris.







Dogon, Kambari

155Y

Human figure with hands
covering the face.

19th century.

H. cm. 24.

*J.J. Klejman, New York.
American private collection
acquired from the above between
the 1960's and the 1970's.
Olivier Castellano collection, Paris.*





титице

EXCEPTIONAL

Mumuye

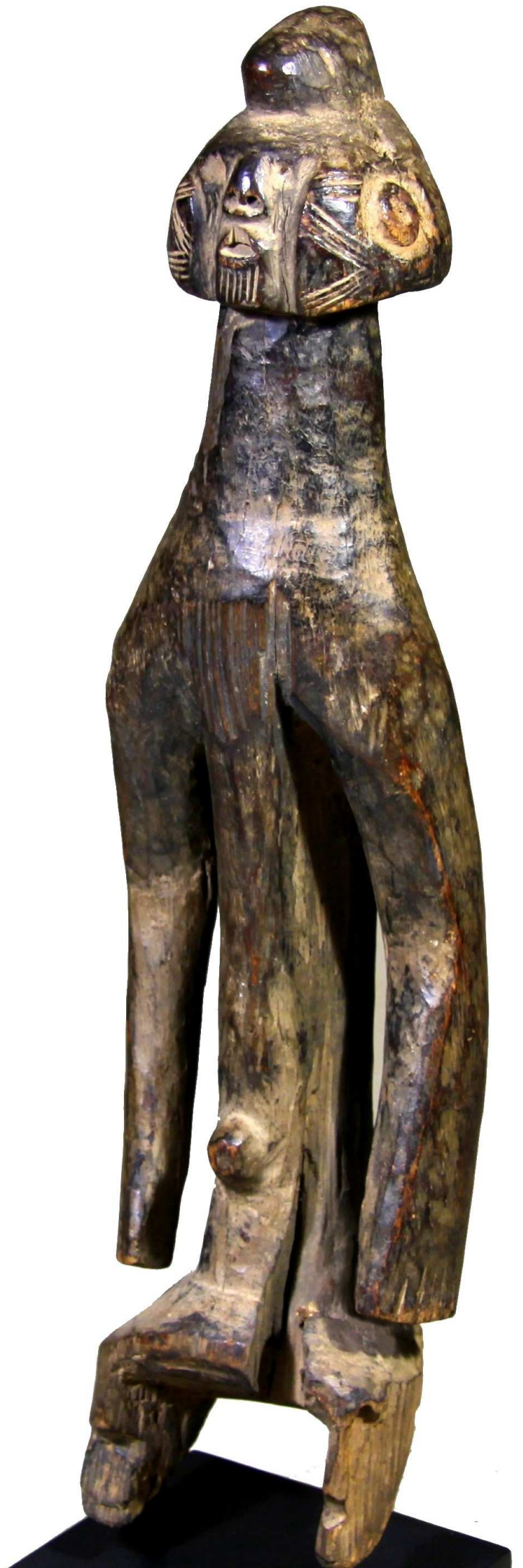
152Y

Human figure.

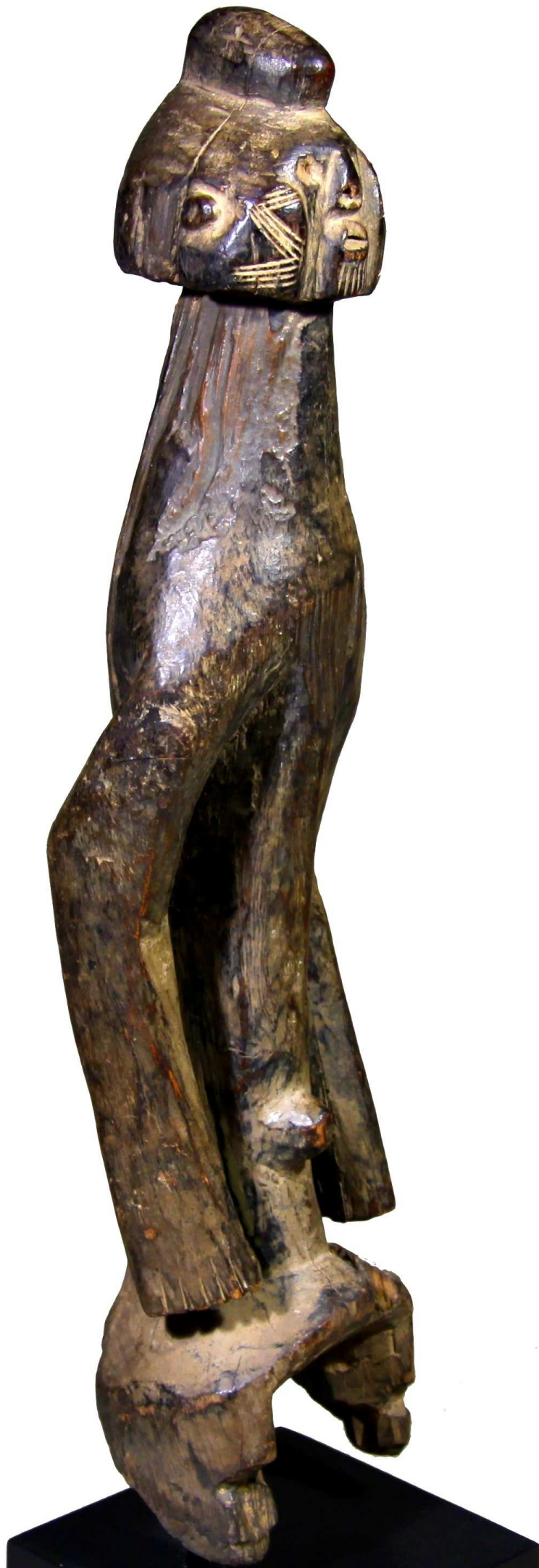
Late 19th / early 20th
century.

H. cm. 42

*Old German collection.
Private collection, Paris.*









Mumuye

144Y

Human figure.

H. cm. 90

*Collected by Jean-Michel Huguenin in 1967.
Jean-Michel Huguenin collection, Paris.
Liliane et Michel Durand-Dessert, Paris.
Pierre Dartevelle, Brussels.*

Exhibitions:

Galerie Majestic, Paris, 2006.

*"Fragments du vivant. Sculptures africaines
dans la collection Durand-Dessert.", La
Monnaie de Paris, Paris, 2008.*





yombe

EXCEPTIONAL



Kongo, Yombe

147Y

Memorial statue of a
dignitary.

19th century.

H. cm. 54

*Collected from a Belgian
colonial between 1903 and
1905.*

*Belgian private collection
by descent.
Private collections, Brussels.*



sepik

EXCEPTIONAL



Telefomin / Tari

166T

Home mask (conventional diction), with magical-protective function.

End of 19th century.

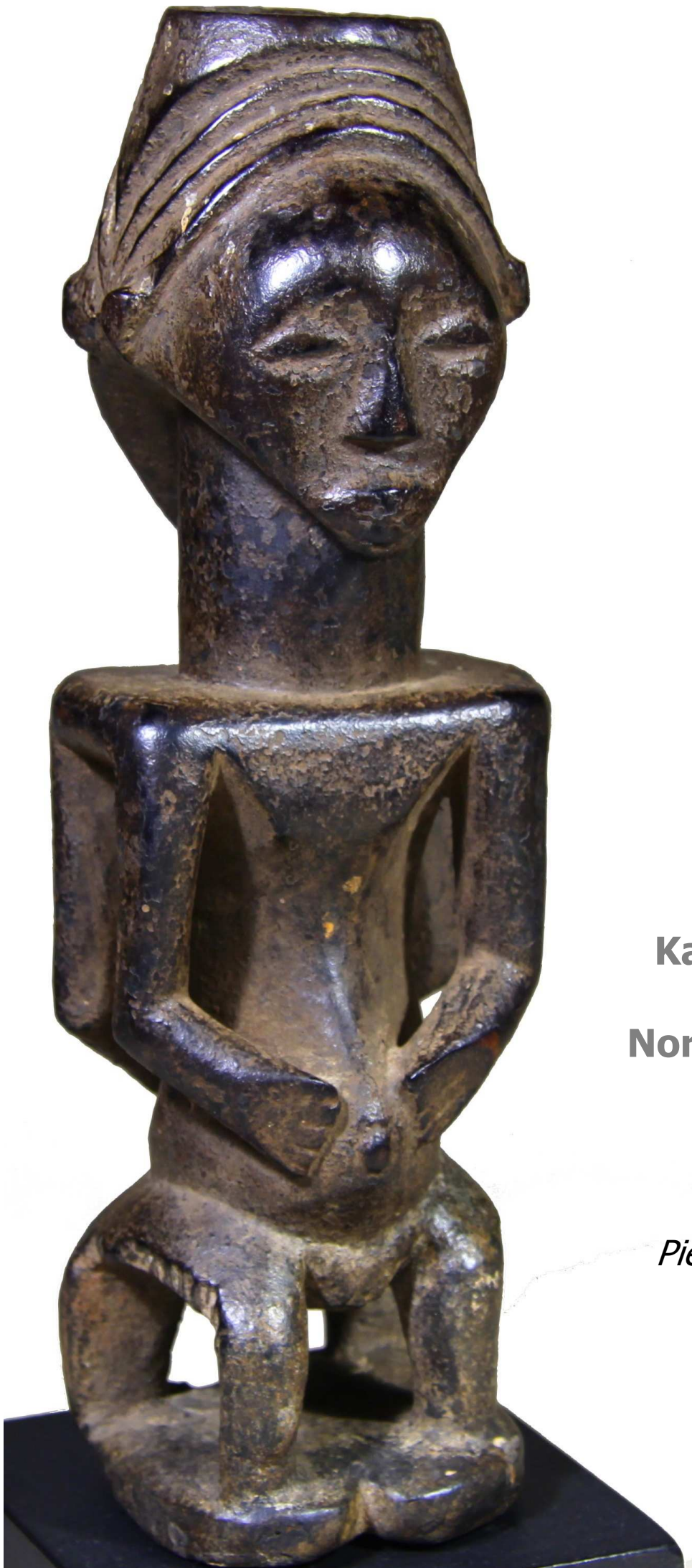
H. cm. 72,5

*Hans Petereit collection, Köln.
Private collection, Paris.*



hemba

EXCEPTIONAL



Hemba

149Y

**Kabeja, janiform magic
statuette.
Northern Hemba style.**

H. cm. 24

*Old Belgian collection.
Pierre Darteville, Brussels.*





senufo

EXCEPTIONAL



Center-Western Senoufo

130Y

Female statuette.

Early 20th century.

H. cm. 31

*Old Parisian collection.
Olivier Castellano, Paris.*





baule

EXCEPTIONAL



Baule

150Y

Ndoma portrait
mask of the *mblo*
cult.

Early 20th century
or earlier.

H. cm. 32

*Collection of a French
diplomat acquired in 1952
from Parke-Bernet
Galleries Inc., New York.
In the family collection by
succession.*







Baule

151Y

Prestige comb.

Early 20th century
or earlier.

H. cm. 23

*Collection of a French diplomat
acquired in New York in the
early 1950's.
In the family collection by
succession.*





ciwara

EXCEPTIONAL



Bamana

145Y

Rare **ciwara**, style of the
Bougouni Region.

H. cm. 62,5

*French private collection,
Menton.
Pierre Dartevelle, Brussels.*



... for more information: berna@debberna.it

Club *supe*
Malaita, Solomon Islands
cm. 76
Late 19th / early 20th century



Denise e Beppe Berna

arte tribale - arte archeologica
tribal art - ancient art

Via Borgo S. Pietro 43 - 40126 Bologna, Italy

Phone +39 051 253175

su appuntamento - by appointment only

copyright © d. & b. berna 2019